



Art Challenge Number 12
Arcimboldo
Making Faces

Hi everyone,

This week's challenge is lots of fun! Take a look at an artist called Giuseppe Arcimboldo. He was famous for painting portraits made up of objects on a theme e.g. flowers, fruit etc. Think of a theme for your objects (see below) and then collect as many items as you can (you may need to check with an adult and ask permission if you need to borrow an object for your artwork). Good luck designing and sculpting and don't forget to send a photo to school.



Art Challenge Number 12:

You will need:

- A tray – to collect your objects on.
- A large piece of paper to create your portrait on.
- Objects within a theme might include:
 - *Kitchen utensils (cutlery etc.)*
 - *Stationery (pens, sharpeners, pencils, paperclips etc)*
 - *Fruit and veg*
 - *-sports equipment etc. etc.*

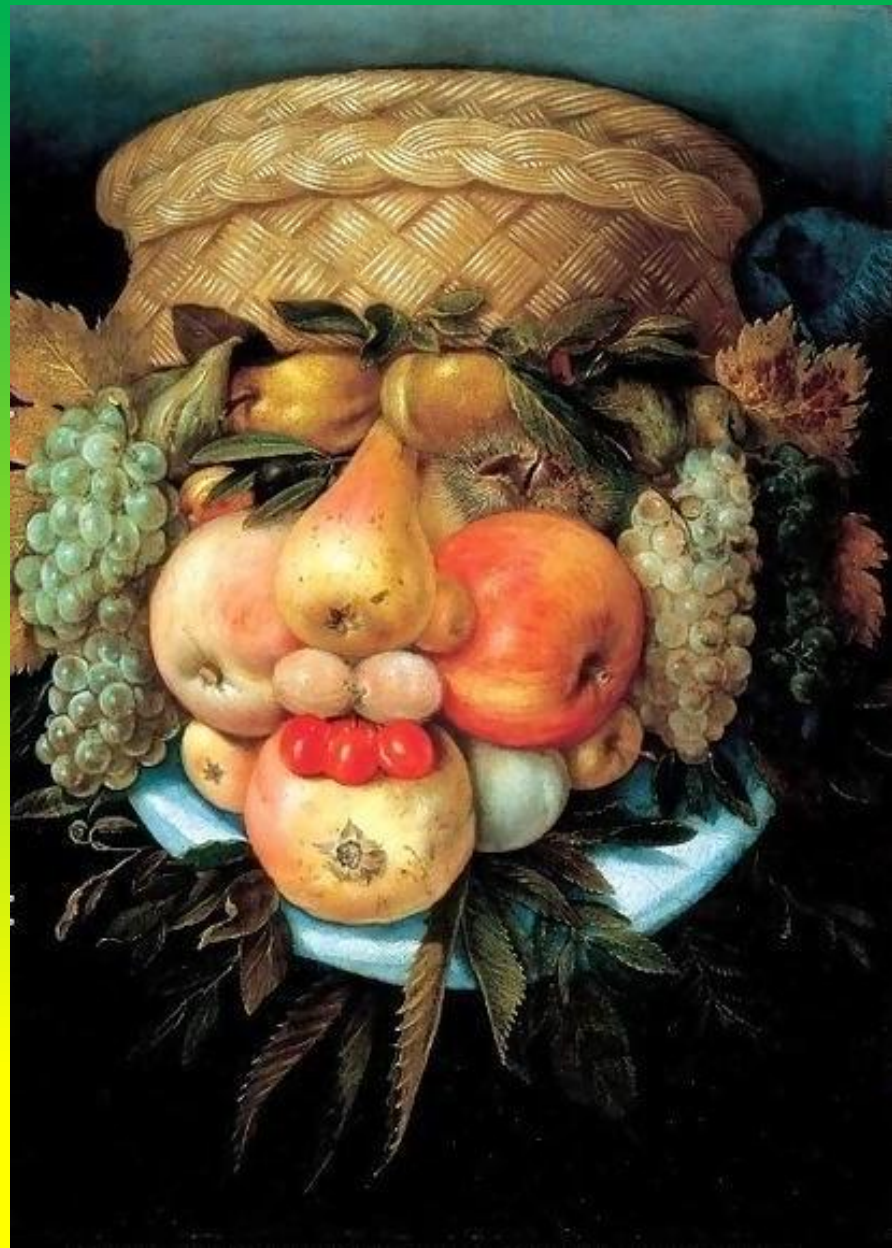


Instructions:

1. Look at Arcimboldo's portraits. He was an Italian painter born in 1527. He was best known for his portraits. Which do you like best? Why? What shapes has he used for different features?
2. Choose a theme for your portrait e.g. kitchen utensils, fruit and veg, garden, stationery etc.
3. Collect as many items as you can within your theme. Ask permission if necessary.
4. Arrange the objects neatly on the tray so that you can select them clearly.
5. Choose a person to do a portrait of. It will be easier if you have a picture of them to look at. It could be someone famous, or a family member or a self-portrait!
6. Start to arrange them on your background paper. Play around with the positions until you achieve the look you are happy with. Sometimes you may need to layer the objects up.
7. Walk away and then come back with 'fresh eyes' to look at your portrait and edit or adapt the shapes as necessary.
8. When you are satisfied, take a photo of your masterpiece and send it to school.



Vortumnus - Arcimboldo



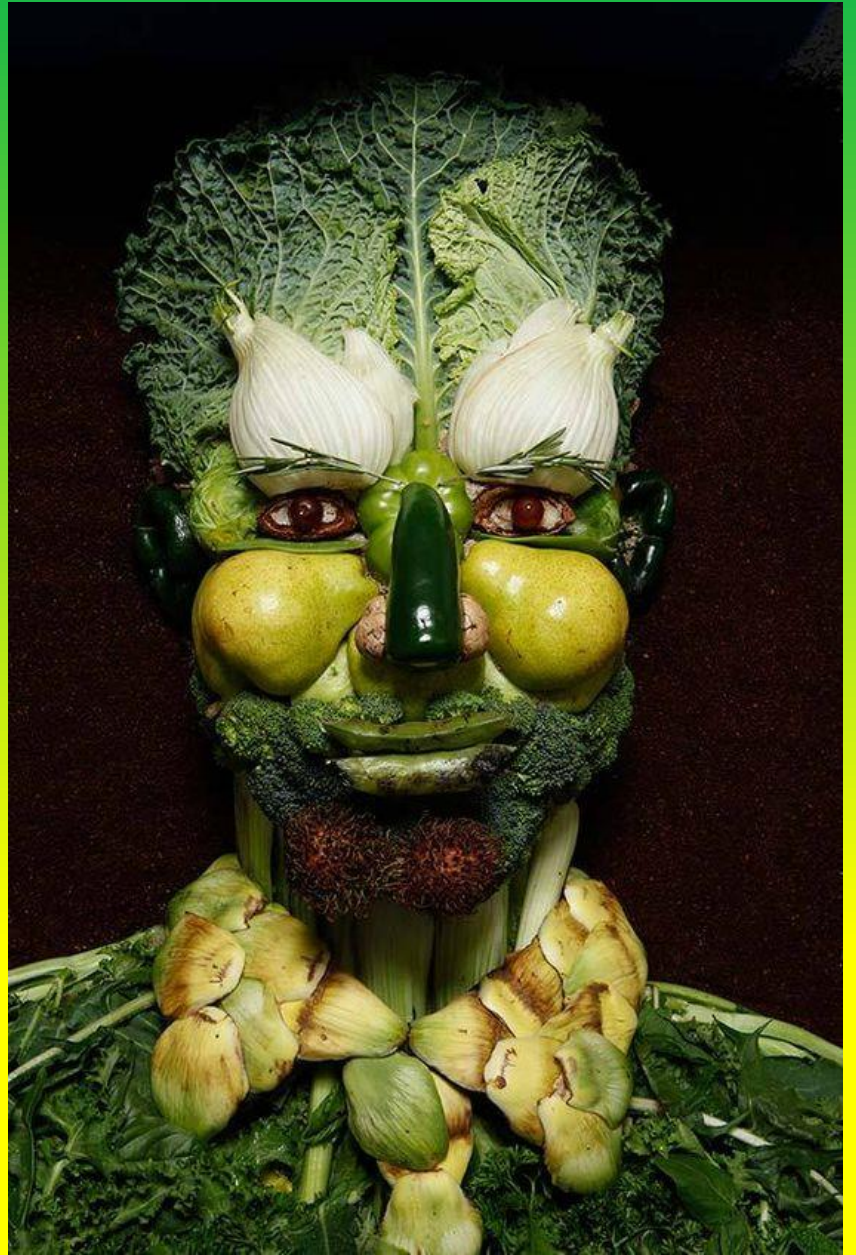
Vaso Reversibile - Arcimboldo



Flora - Arcimboldo



The Librarian - Arcimboldo





MY CREATIONS USING STATIONERY!

